



WINDMILL PLANTATION

KIRTON IN LINDSEY



Windmill Plantation, Kirton in Lindsey, North Lincolnshire, DN21 4FE

The final 43 homes
of Windmill Way



WINDMILL
PLANTATION
KIRTON IN LINDSEY



A Thriving Village with Community at its Heart



Mount Pleasant Mill



Lincolnshire Wolds

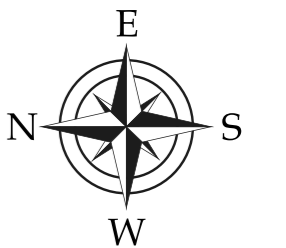


Kirton in Lindsey Town Hall

Kirton in Lindsey is a stylish market town. Independent shops, pubs and eateries surround Kirton's Market Place and line its High Street.

There is a choice of nurseries along with an Ofsted approved 'good' primary school and the secondary school 'Huntcliff' which prides itself on being community driven.

With a population of just over 3000, Kirton in Lindsey is within easy reach of the A1, Lincoln and Beverley.

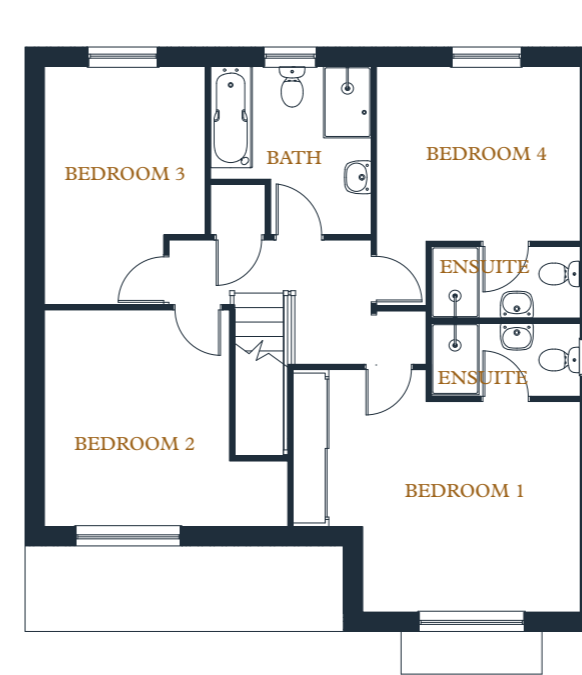


Development Layout

- PHASE 1
- PHASE 2
- PHASE 3

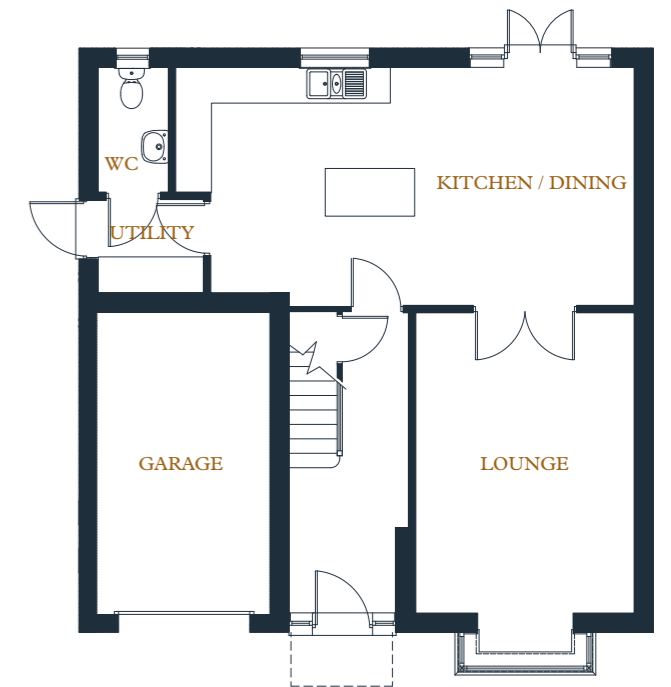
The Redbourne

Plot 74a



Ground Floor

Lounge | 18.81 m²
Kitchen / Dining | 32.19 m²
Utility | 2.87 m²



First Floor

Bedroom 1 | 17.28 m²
Bedroom 2 | 15 m²
Bedroom 3 | 11 m²
Bedroom 4 | 10.31 m²

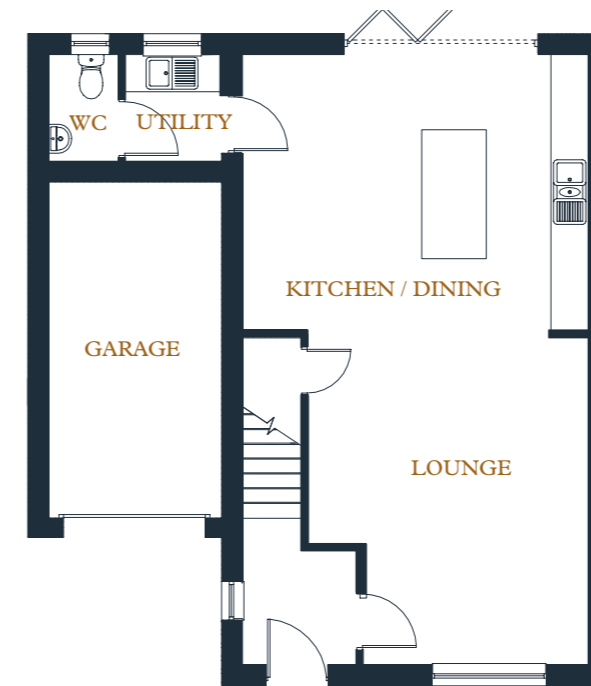
4 bedroomed detached house set across 2 floors with a garage and 2 additional parking spaces.

Ground floor: open plan kitchen-dining area with patio leading out into the garden. Separate living room, WC and utility room.

First Floor: Four bedrooms, two of them ensuite and a separate family bathroom.

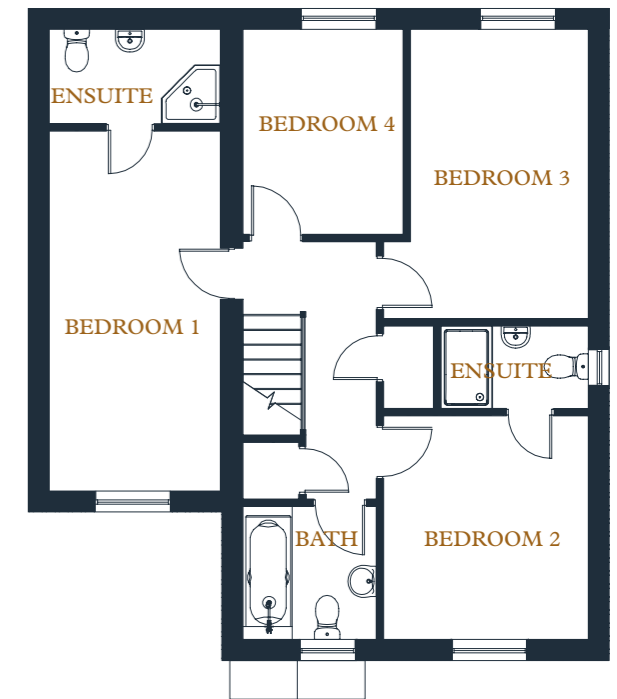
The Marley

Plot 74b



Ground Floor

Lounge		22.29 m ²
Kitchen / Dining		23.22 m ²
Utility		2.55 m ²



First Floor

Bedroom 1		14.86 m ²
Bedroom 2		11.19 m ²
Bedroom 3		14.49 m ²
Bedroom 4		7.98 m ²

4 bedroomed detached house set across 2 floors with a garage and driveway.

Ground floor: open plan kitchen – dining – living area with bi-folds leading out into the garden.
Separate WC and utility room.

First Floor: Four bedrooms, two of them ensuite and a separate family bathroom.

The Keedby

Plot 75



Ground floor: open plan kitchen-dining area leading into a conservatory with bi-folds opening out into the garden. Separate living room, WC and utility room.

First Floor: Four bedrooms, two of them ensuite and a separate family bathroom.

Ground Floor

Lounge | 23 m²

Kitchen / Dining | 31.3 m²

Utility | 4.64 m²



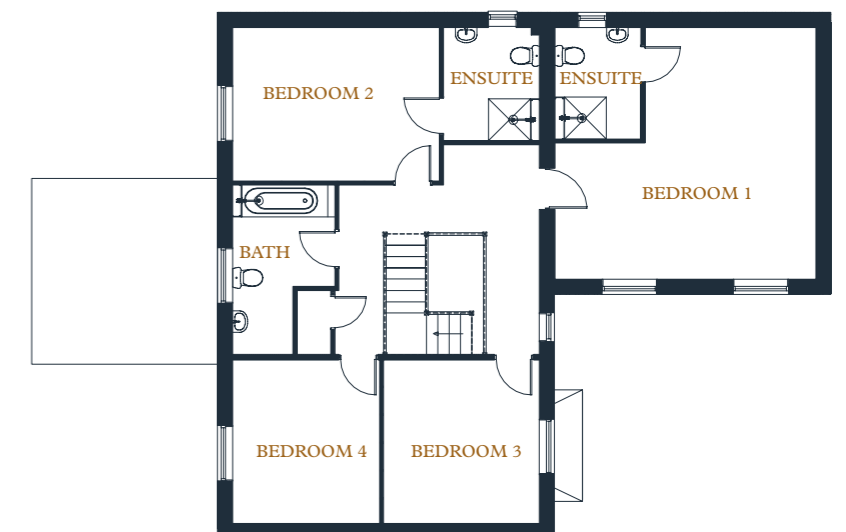
First Floor

Bedroom 1 | 30.98 m²

Bedroom 2 | 15 m²

Bedroom 3 | 11.98 m²

Bedroom 4 | 11.42 m²



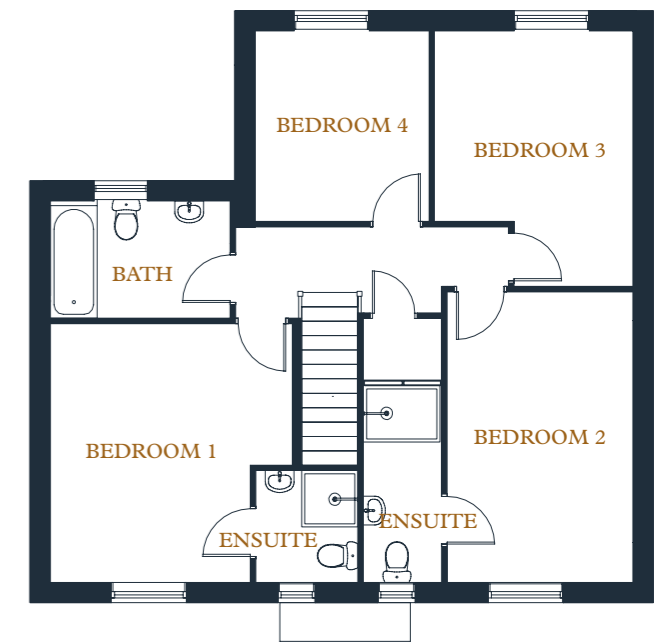
The Sandtoft

Plot 76



Ground Floor

- Lounge | 24.1 m²
- Kitchen / Dining | 42.5 m²
- Utility | 35.5 m²



First Floor

- Bedroom 1 | 16.39 m²
- Bedroom 2 | 14.0 m²
- Bedroom 3 | 13.28 m²
- Bedroom 4 | 9.01 m²

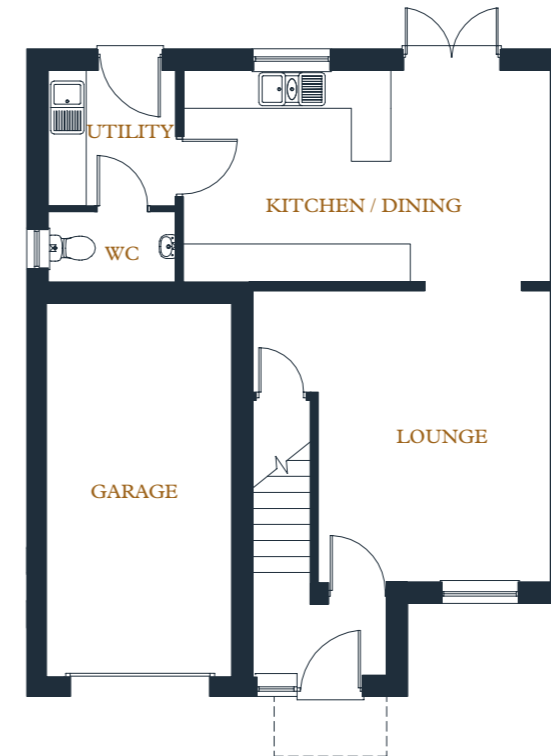
4 bedroomed detached house set across 2 floors with a garage and driveway.

Ground floor: open plan kitchen-dining area bi-folds opening out into the garden. Separate living room, WC and utility room.

First Floor: Four bedrooms, two of them ensuite and a separate family bathroom.

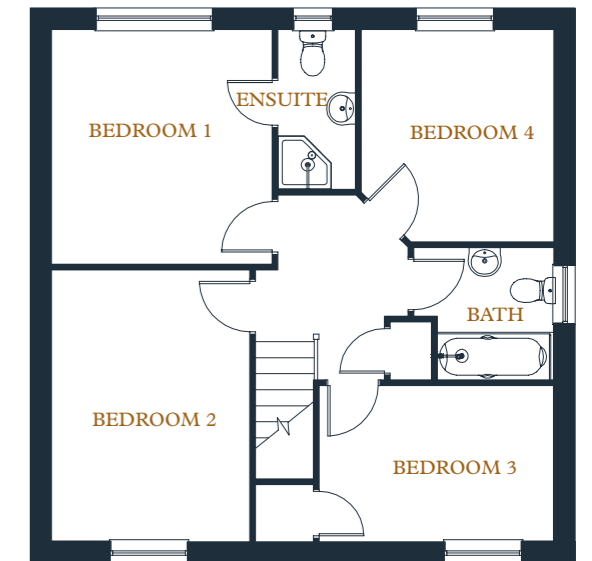
The Firsby

Plot 77a



Ground Floor

- Lounge | 20.2 m²
- Kitchen / Dining | 18.2 m²
- Utility | 3.99 m²



First Floor

- Bedroom 1 | 11.98 m²
- Bedroom 2 | 12.58 m²
- Bedroom 3 | 8.59 m²
- Bedroom 4 | 9.59 m²

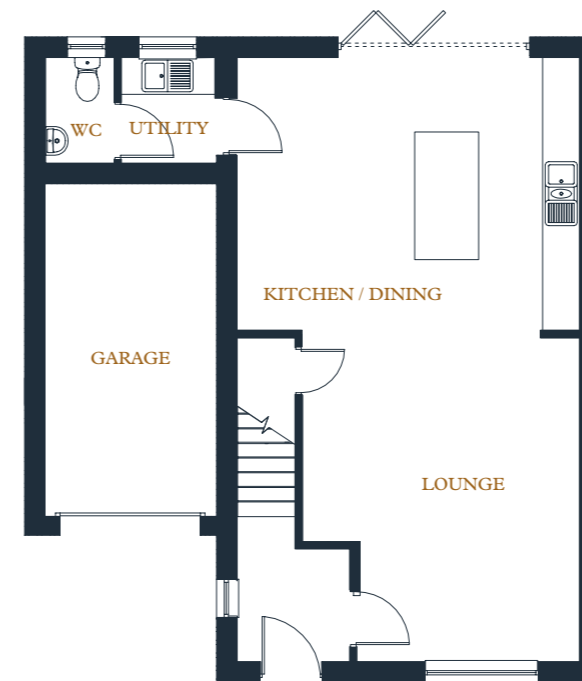
4 bedroomed detached house set across 2 floors with a garage and driveway.

Ground floor: open plan kitchen-dining area with a patio opening out into the garden. Separate living room, WC and utility room.

First Floor: Four bedrooms, one of them ensuite and a separate family bathroom.

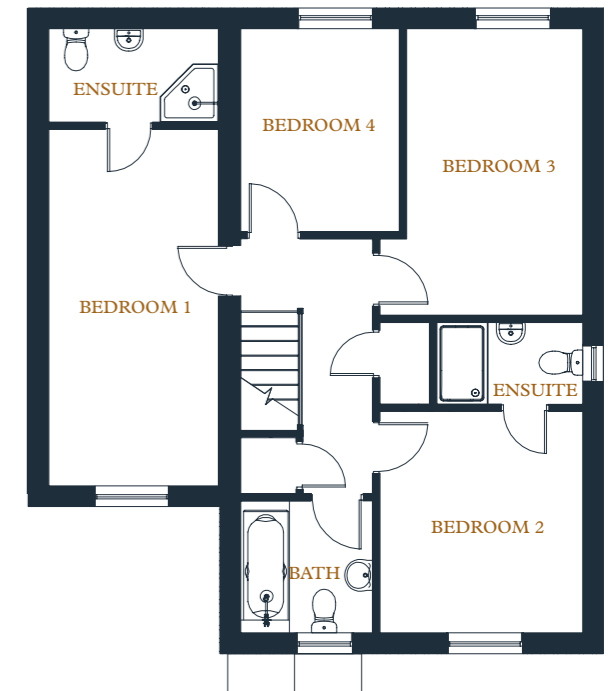
The Marley

Plot 77b



Ground Floor

Lounge		22.29 m ²
Kitchen / Dining		23.22 m ²
Utility		2.55 m ²



First Floor

Bedroom 1		14.86 m ²
Bedroom 2		11.19 m ²
Bedroom 3		14.44 m ²
Bedroom 4		7.98 m ²

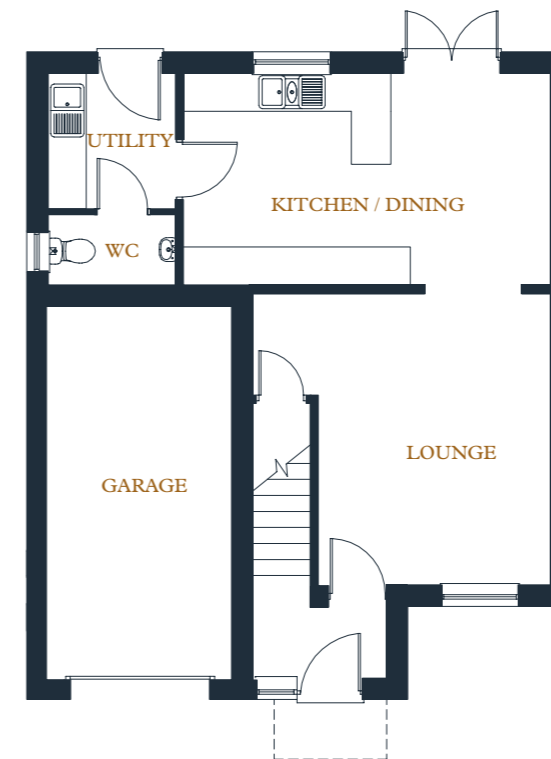
4 bedroomed detached house set across 2 floors with a garage and driveway.

Ground floor: open plan kitchen-dining-living area with bi-folds opening out into the garden. Separate WC and utility room.

First Floor: Four bedrooms, two of them ensuite and a separate family bathroom.

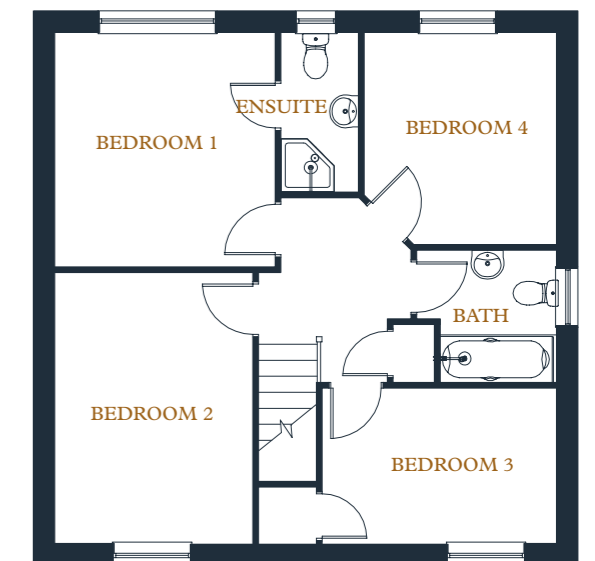
The Firsby

Plot 78a



Ground Floor

Lounge		24.1 m ²
Kitchen / Dining		42.5 m ²
Utility		35.5 m ²



First Floor

Bedroom 1		11.98 m ²
Bedroom 2		12.58 m ²
Bedroom 3		8.59 m ²
Bedroom 4		9.59 m ²

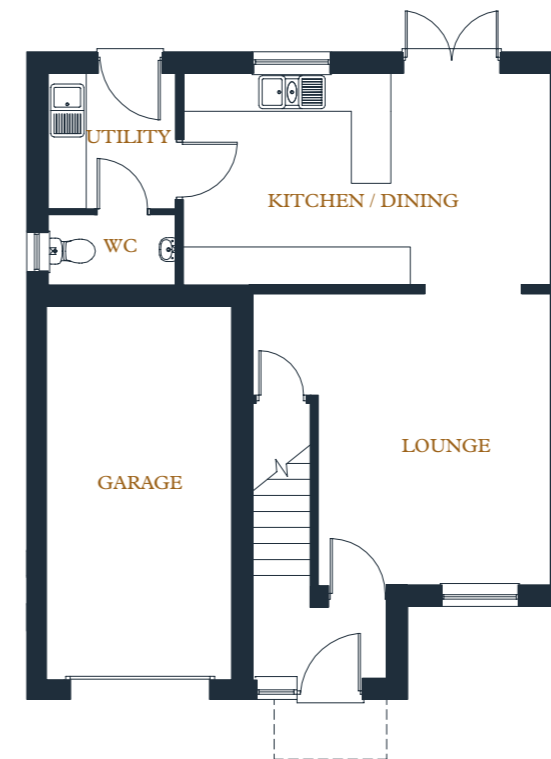
4 bedroomed detached house set across 2 floors with a garage and driveway.

Ground floor: open plan kitchen-dining area with a patio opening out into the garden. Separate living room, WC and utility room.

First Floor: Four bedrooms, one of them ensuite and a separate family bathroom.

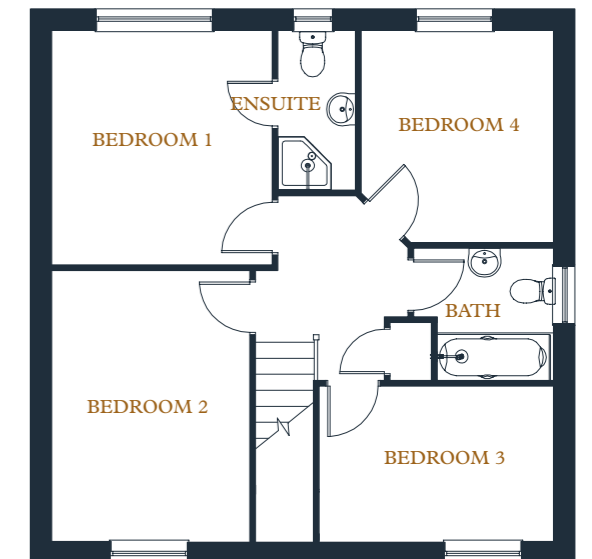
The Firsby

Plot 78b



Ground Floor

Lounge | 20.2 m²
 Kitchen / Dining | 18.2 m²
 Utility | 4 m²



First Floor

Bedroom 1 | 12.58 m²
 Bedroom 2 | 12.17 m²
 Bedroom 3 | 8.59 m²
 Bedroom 4 | 7.56 m²

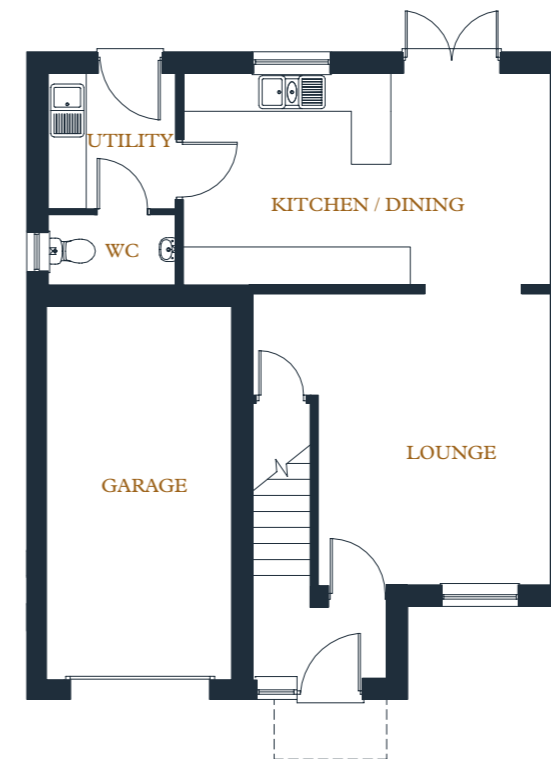
4 bedroomed detached house set across 2 floors with a garage and driveway.

Ground floor: open plan kitchen-dining area with a patio opening out into the garden. Separate living room, WC and utility room.

First Floor: Four bedrooms, one of them ensuite and a separate family bathroom.

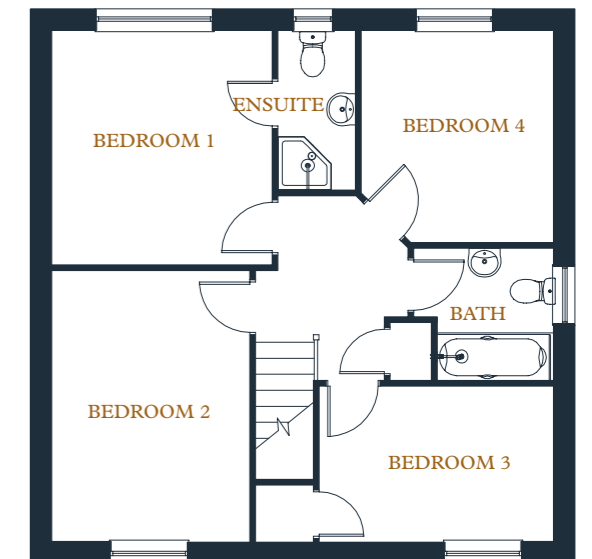
The Firsby

Plot 78c



Ground Floor

- Lounge | 24.1 m²
- Kitchen / Dining | 42.5 m²
- Utility | 35.5 m²



First Floor

- Bedroom 1 | 11.98 m²
- Bedroom 2 | 12.58 m²
- Bedroom 3 | 8.59 m²
- Bedroom 4 | 9.59 m²

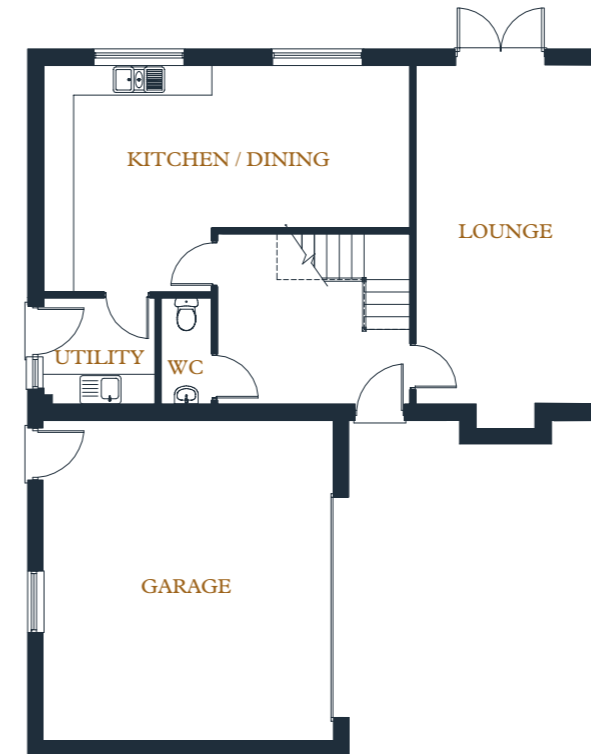
4 bedroomed detached house set across 2 floors with a garage and driveway.

Ground floor: open plan kitchen-dining area with a patio opening out into the garden. Separate living room, WC and utility room.

First Floor: Four bedrooms, one of them ensuite and a separate family bathroom.

The Keedby

Plot 79



Ground Floor

- Lounge | 23.5 m²
- Kitchen / Dining | 32 m²
- Utility | 4.5 m²



First Floor

- Bedroom 1 | 80.7 m²
- Bedroom 2 | 15 m²
- Bedroom 3 | 12.3 m²
- Bedroom 4 | 11.6 m²

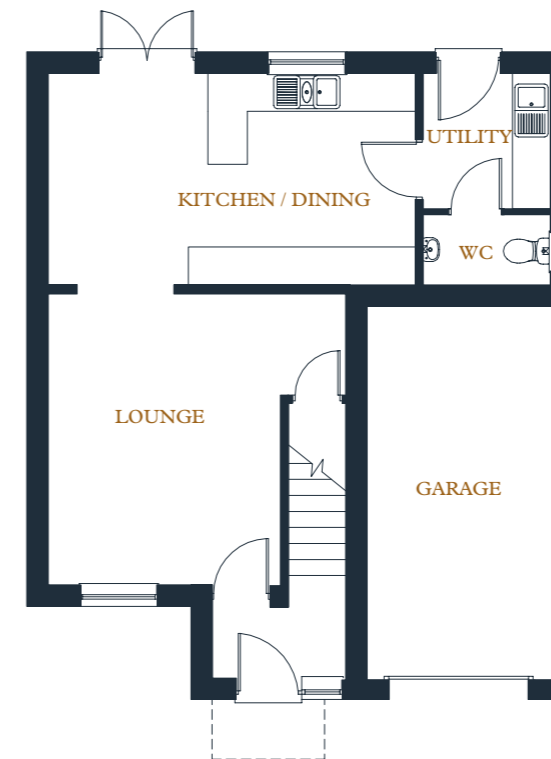
4 bed roomed detached house set across 2 floors with a double garage and driveway.

Ground floor: open plan kitchen-dining area. Separate living room with a patio opening out onto the garden. Separate WC and utility room.

First Floor: Four bedrooms, two of them ensuite and a separate family bathroom.

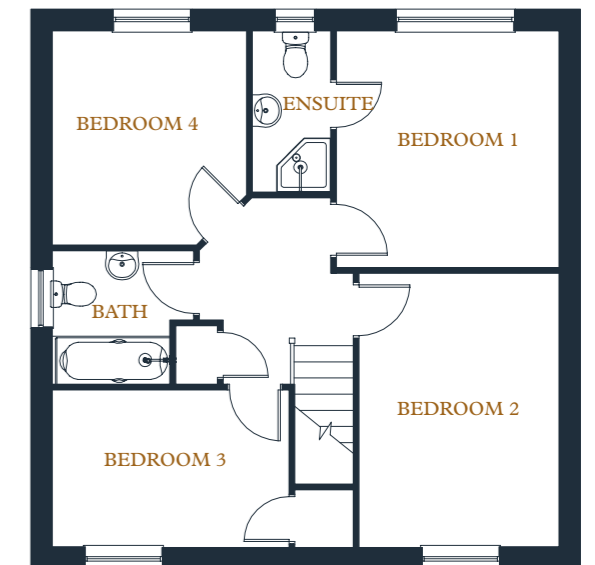
The Firsby

Plot 82a



Ground Floor

Lounge		20.2 m ²
Kitchen / Dining		18.2 m ²
Utility		3.99 m ²



First Floor

Bedroom 1		11.9 m ²
Bedroom 2		12.5 m ²
Bedroom 3		8.59 m ²
Bedroom 4		9.56 m ²

4 bedroomed detached house set across 2 floors with a garage and driveway.

Ground floor: open plan kitchen-dining area with a patio opening out into the garden. Separate living room, WC and utility room.

First Floor: Four bedrooms, one of them ensuite and a separate family bathroom.

Specifications



Contact the sales representative for individual plot specification.

About Truelove Property



We are Truelove property, a family-run business based in the heart of Lincolnshire with over 50 years' experience and over a 1000 homes to our name.

We pride ourselves not only on functionality and quality but having the ability to provide someone a priceless home they can really fall in love with.



Travel



Road

- 20 mins (11.7 miles) to the market town of Gainsborough
- 28mins (19 miles) to Lincoln
- 40mins Doncaster (34 miles)
- 1 hour Beverley (33 miles)
- 1 hour Sheffield (55 miles)

Train

Less than a mile to the local train station which connects Kirton Lindsey to the Northern Rail network on Saturdays with trains throughout the day linking the town to Sheffield, Gainsborough, Grimsby and Cleethorpes.

During the week the nearest train station which links the area onto the Northern Rail network is Scunthorpe, a 16 min drive away.

Bus

During the week – the 94 links the town with local villages and towns including Brigg and Hibaldstow.

Stagecoach Cliffsider 103 service links the town to Scunthorpe and Lincoln, calling at North Lindsey College in Scunthorpe.

Air

Humberside International Airport 16.7 miles, 20 mins



Contact us

T 01522 526 979

E info@trueloveproperty.co.uk